

Item No.:
Meeting Date:

3b_supp
February 10, 2015

Seattle's Duwamish Area: SoDo Transportation Update



Terminal 91

Pier 86

Terminal 46

T-18 On-Dock Rail

T-5 On-Dock Rail

Terminal 5

Terminal 18

Terminal 25/30

West Seattle Hwy

EMWGS & Argo Access

UPRR (ARGO)

BNSF (SIG - North)

BNSF (SIG - South)

SR-99

SR-519

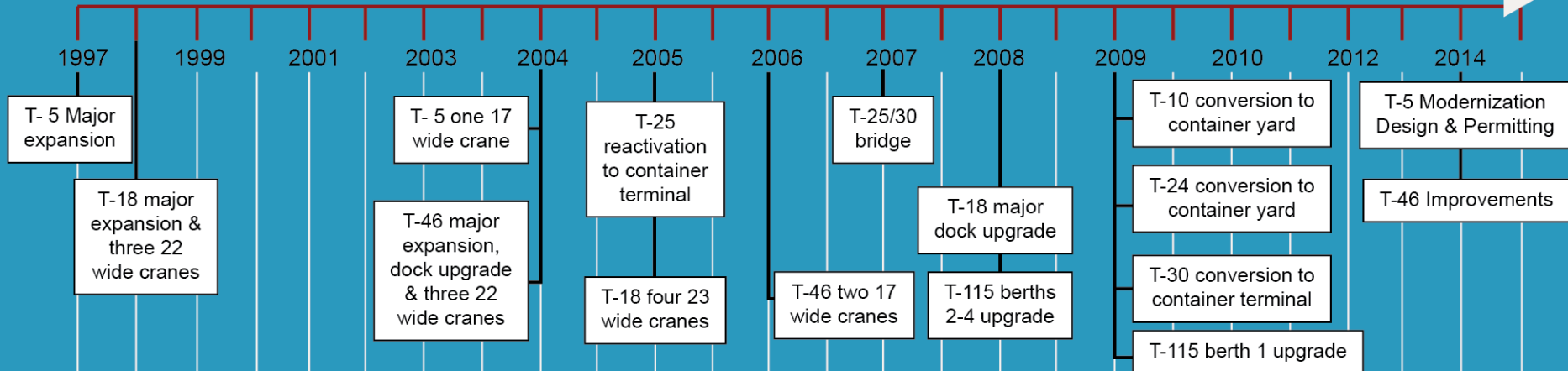
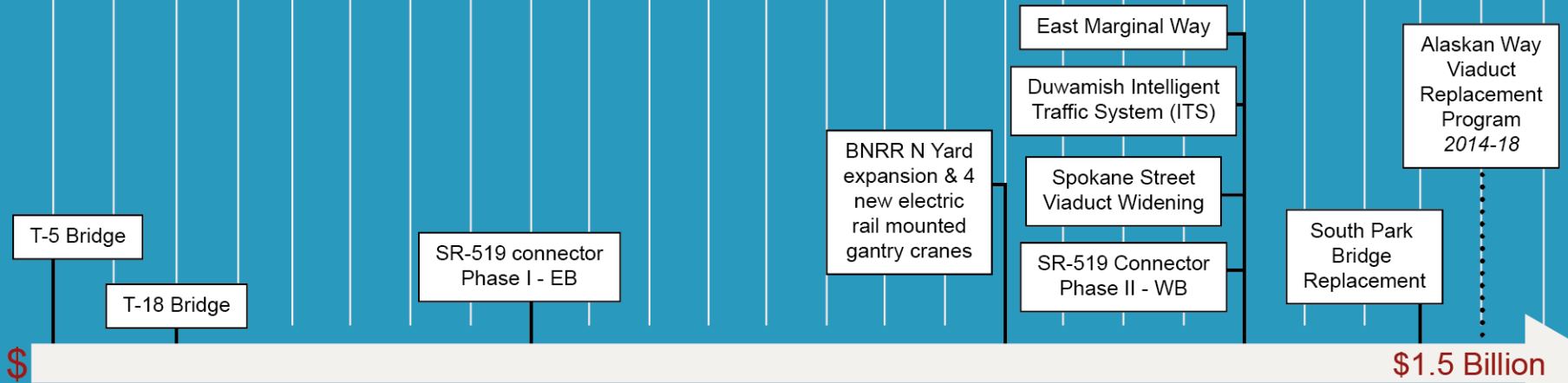
SR-99

5

90

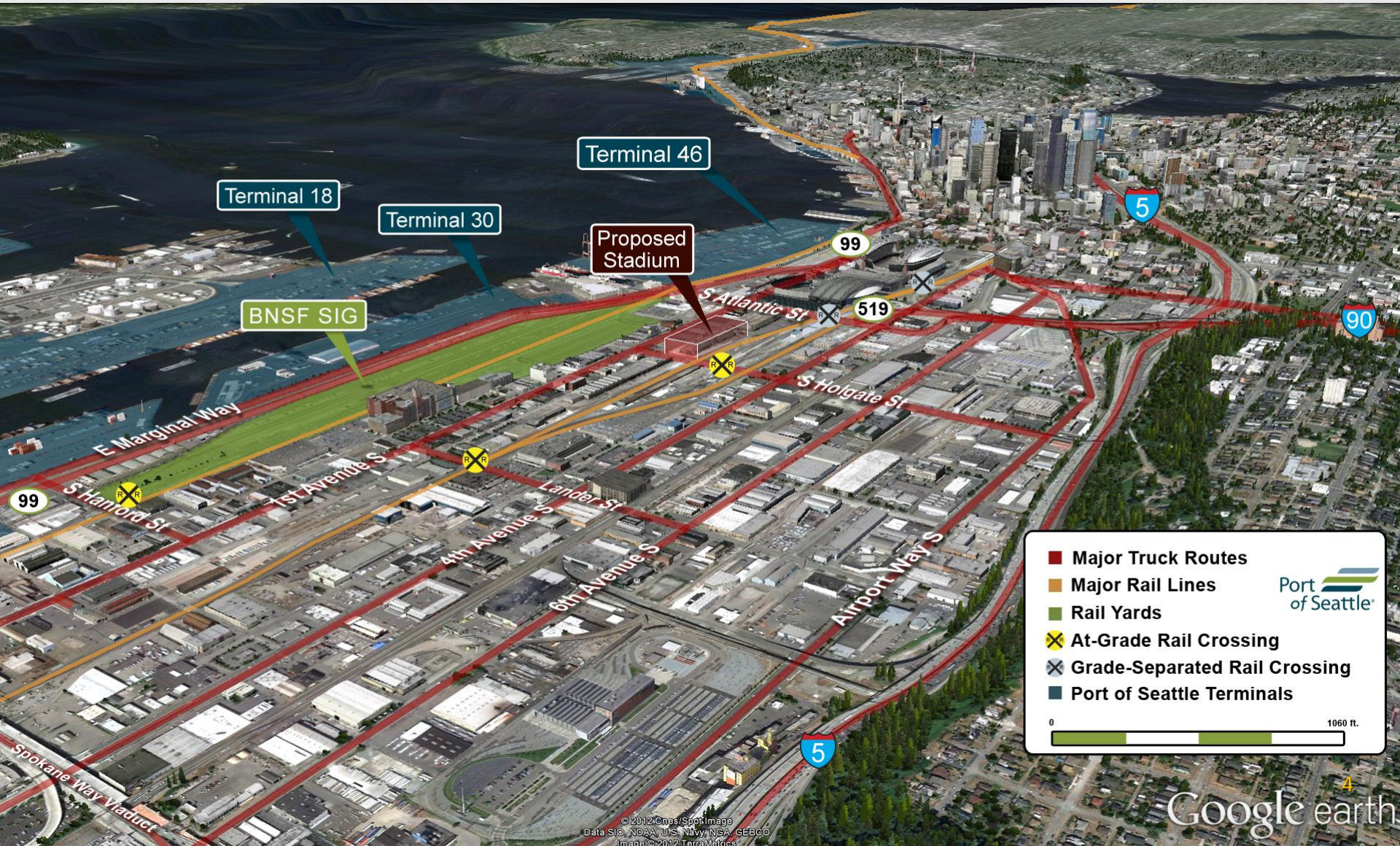
Major Projects & Investment

Roads & Rail



Terminals

SoDo Transportation View



Terminal 18

Terminal 30

Terminal 46

Proposed Stadium

BNSF SIG

Major Truck Routes

Major Rail Lines

Rail Yards

At-Grade Rail Crossing

Grade-Separated Rail Crossing

Port of Seattle Terminals

0 1060 ft.

Port of Seattle

Grade Separated Harbor Access

“Little h” Grade Separation

- Unrestricted truck access to T46 gate, BNSF & I-90
- Opened early 2014



East Marginal Way Grade Separation

- Unrestricted truck access to T5, T-18, UPRR Argo gates
- Completed spring 2012



Upcoming Projects and Plans

In the pipeline

- North Argo Access / East Marginal Way, Phase 2
- Manufacturing Industrial Centers Freight Access Project
- Heavy Haul Corridor
- Proposed “SoDo Arena” environmental review

Opportunities

- Seattle Freight Master Plan
- East Marginal Way Corridor
- Holgate Safety Improvements
- Lander St Overpass revisit

Transload Facilities & Heavy Haul Corridor (as proposed 2015)



Holgate Street Crossing After Event



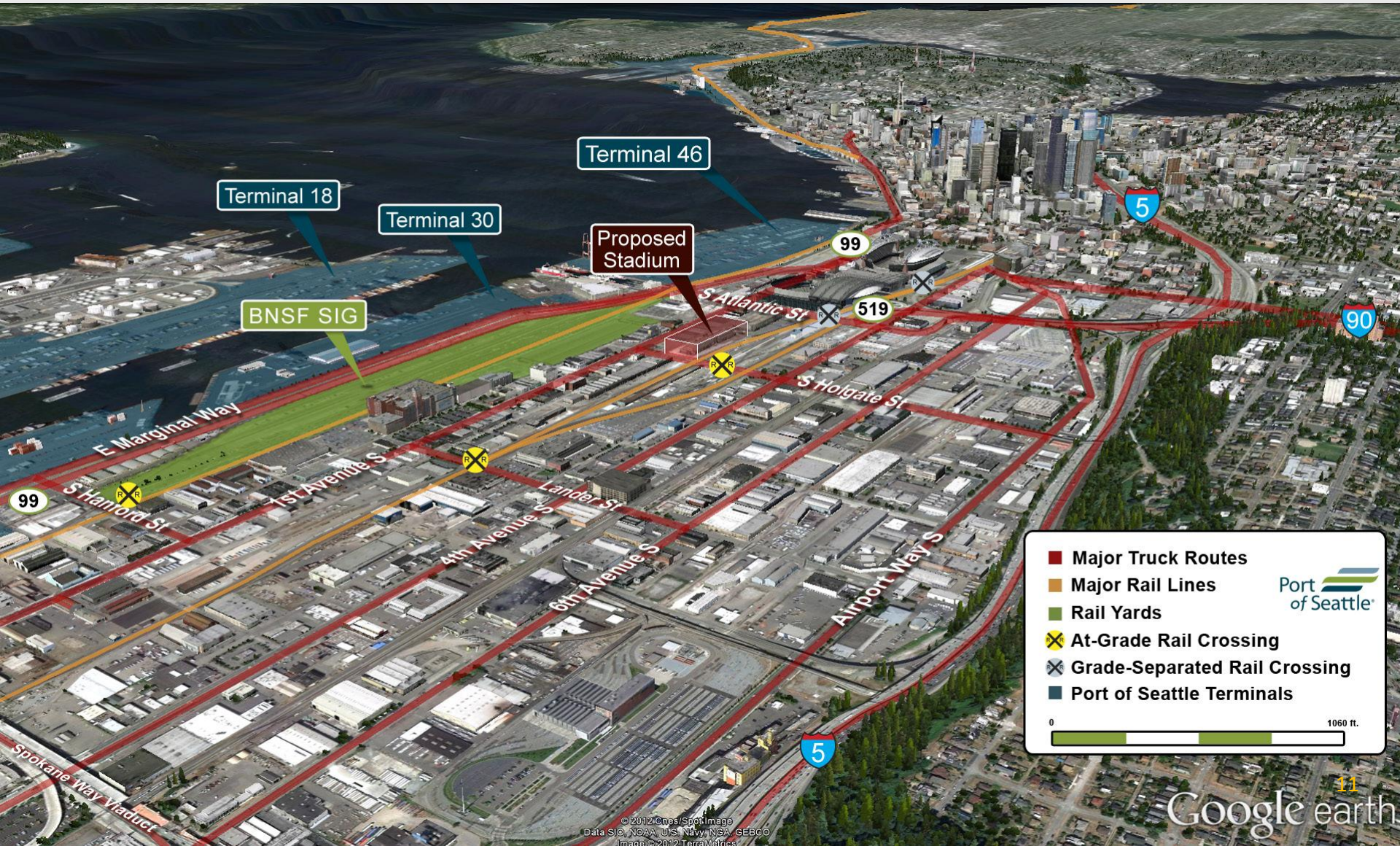
Lander Overpass (as proposed 2007)



Potential Game Changers

2014–2016	Central Seawall construction
2017–2022	Colman Dock rehabilitation
2018?	SR 99 Bored Tunnel opens
2018 –2020?	Surface Alaskan Way / Viaduct Demolition / Battery Street Tunnel decommissioning
Future	Proposed SoDo Arena Stadium Area and WOSCA site redevelopment Tolling of Bored Tunnel - traffic diversion

Discussion



Terminal 18

Terminal 30

Terminal 46

Proposed Stadium

BNSF SIG

- Major Truck Routes
- Major Rail Lines
- Rail Yards
- ⊗ At-Grade Rail Crossing
- ⊗ Grade-Separated Rail Crossing
- Port of Seattle Terminals

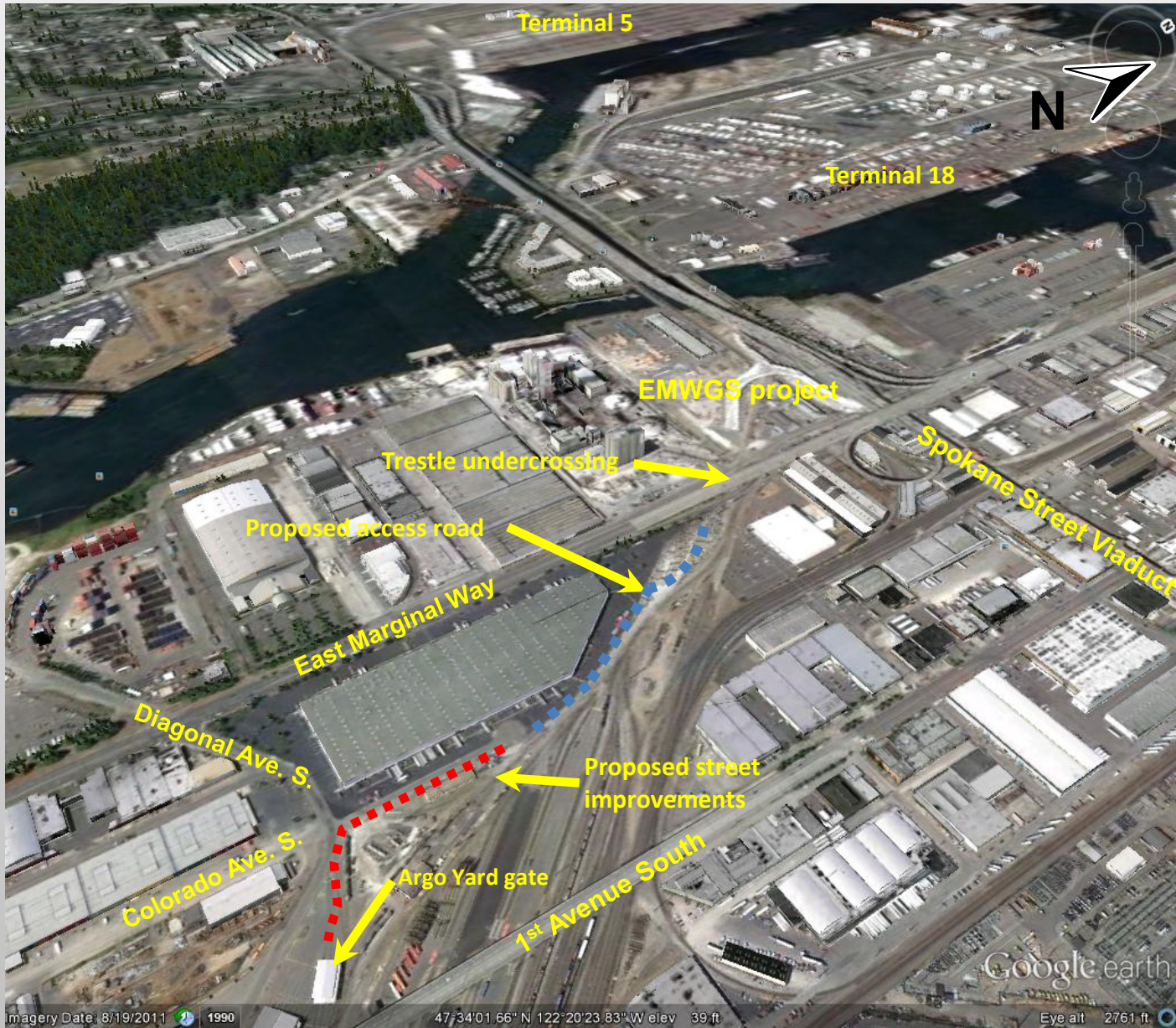
0 1060 ft.

Port of Seattle

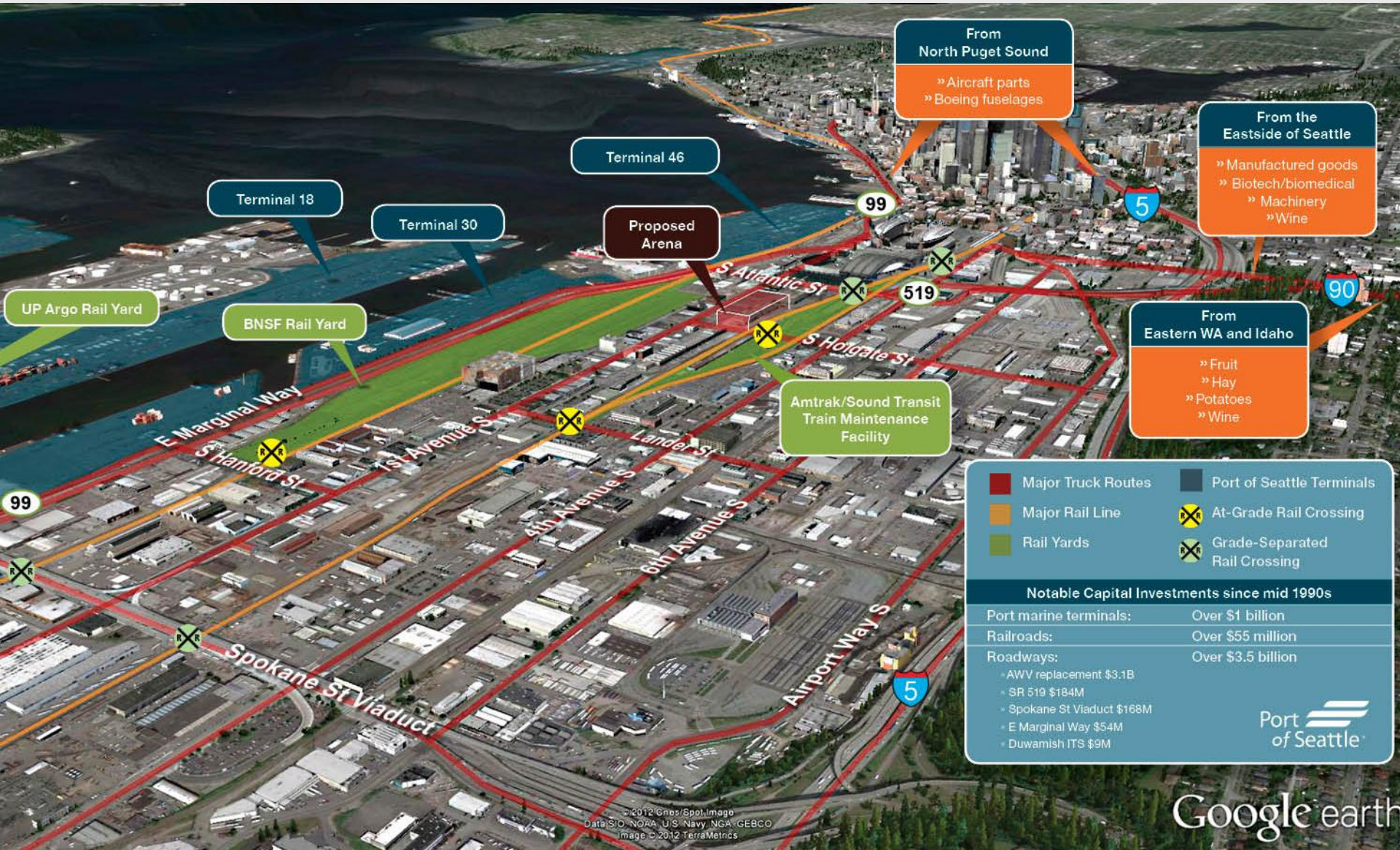
Back Pocket Slides



Argo Yard Truck Access



SODO and the Proposed Arena



Street vacations will exacerbate congestion along the Port's main freeway access routes

